

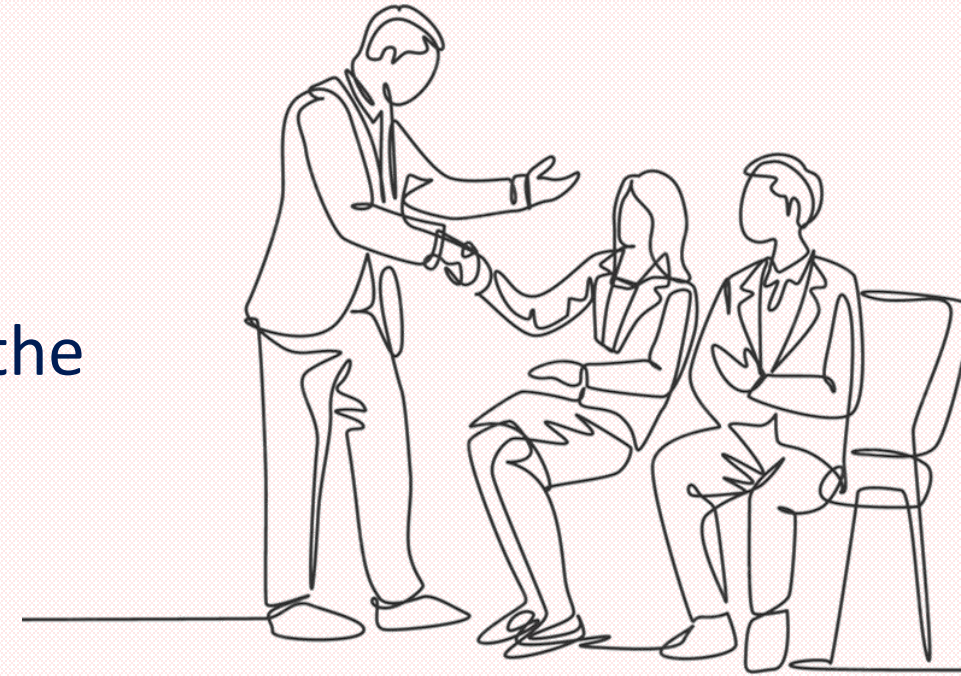


Florida's Primaries Explained

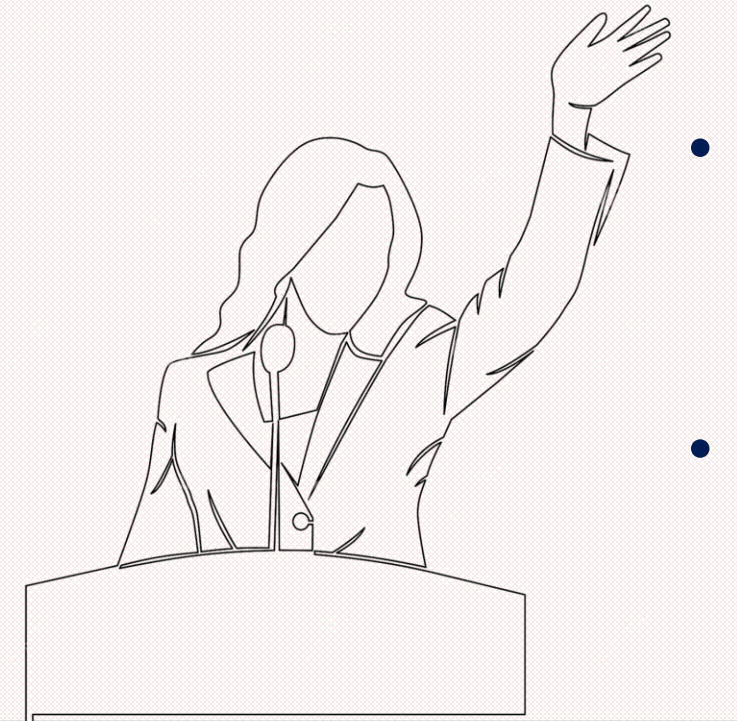
Melissa Arnold, Supervisor of Elections

What is a Closed Primary?

- An election in which a voter may only vote for the candidates of the party in which he or she is registered.



- The primaries determine which candidates will ultimately end up on the ballot during the General Election representing each of the different political parties.
- It ensures that those affiliated with the party can determine for themselves who best aligns with their political views.



How Does It Work?

- Candidates from each party must first compete against each other to gain their overall party's support in the August Election.
- During the Primary, all registered Democrats come together and pick the Democrats candidate that they want to move forward to the General Election in November. The same would go for all registered Republicans, Green Party, etc.
- This doesn't apply to Nonpartisan Office, such as Judicial and School Board offices.



The Primary

- Depending on what party you decide to affiliate with, you could get a ballot that looks like any one of these on Election Day.
- Once the results are in and counted for the day, we will know which candidates will be moving forward in the elections.

Sample Primary Election Ballot August 23, 2022 Republican Party	
<ul style="list-style-type: none">• To vote, fill in the oval completely next to your choice. Use only the marker provided or a black or blue pen.• If you make a mistake, ask for a new ballot. Do not cross out or your vote may not count.	
Contest1 (Vote for 1)	
<ul style="list-style-type: none"><input type="radio"/> Candidate A<input type="radio"/> Candidate B<input type="radio"/> Candidate C<input type="radio"/> Candidate D	

Sample Primary Election Ballot August 23, 2022 Democratic Party	
<ul style="list-style-type: none">• To vote, fill in the oval completely next to your choice. Use only the marker provided or a black or blue pen.• If you make a mistake, ask for a new ballot. Do not cross out or your vote may not count.	
Contest1 (Vote for 1)	
<ul style="list-style-type: none"><input type="radio"/> Candidate E<input type="radio"/> Candidate F<input type="radio"/> Candidate G	

Sample Primary Election Ballot August 23, 2022 Green Party	
<ul style="list-style-type: none">• To vote, fill in the oval completely next to your choice. Use only the marker provided or a black or blue pen.• If you make a mistake, ask for a new ballot. Do not cross out or your vote may not count.	
Contest1 (Vote for 1)	
<ul style="list-style-type: none"><input type="radio"/> Candidate H<input type="radio"/> Candidate I	

The General

- The Primary Election winners move on to the General Election where voters can vote for whichever candidate they ultimately want regardless of their political affiliation.

Sample Primary Election Ballot August 23, 2022 Republican Party		Sample Primary Election Ballot August 23, 2022 Democratic Party		Sample Primary Election Ballot August 23, 2022 Green Party		Sample General Election Ballot November 8, 2022 Okeechobee County	
<ul style="list-style-type: none">To vote, fill in the oval completely next to your choice. Use only the marker provided or a black or blue pen.If you make a mistake, ask for a new ballot. Do not cross out or your vote may not count.		<ul style="list-style-type: none">To vote, fill in the oval completely next to your choice. Use only the marker provided or a black or blue pen.If you make a mistake, ask for a new ballot. Do not cross out or your vote may not count.		<ul style="list-style-type: none">To vote, fill in the oval completely next to your choice. Use only the marker provided or a black or blue pen.If you make a mistake, ask for a new ballot. Do not cross out or your vote may not count.		<ul style="list-style-type: none">To vote, fill in the oval completely next to your choice. Use only the marker provided or a black or blue pen.If you make a mistake, ask for a new ballot. Do not cross out or your vote may not count.	
Contest1 (Vote for 1)		Contest1 (Vote for 1)		Contest1 (Vote for 1)		Contest1 (Vote for 1)	
<input type="radio"/> Candidate A		<input type="radio"/> Candidate E		<input type="radio"/> Candidate H		<input type="radio"/> Candidate A (REP)	
<input type="radio"/> Candidate B		<input type="radio"/> Candidate F		<input type="radio"/> Candidate I		<input type="radio"/> Candidate G (DEM)	
<input type="radio"/> Candidate C		<input type="radio"/> Candidate G				<input type="radio"/> Candidate I (NPA)	
<input type="radio"/> Candidate D							

Fun Fact

- The party that is listed first is determined by the political affiliation of the current governor.

Questions?